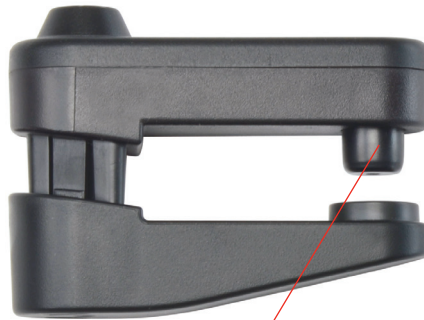


# Mini NeedleLok™ Tag



Alpha High-Theft Solutions



Retractable button covers and protects needle



Sharp needle minimizes damage

Wide opening allows freedom of placement on garment

Maximizes display opportunities



Designed specifically for thin and delicate clothing materials, the Mini NeedleLok Tag uses a sharp needle that does not leave behind a visible mark after being removed.

### KEY FEATURES:

- S3 Lock, Standard Lock or Super Lock clutch strengths
- Single-piece tag with an integrated needle, easier to manage by associates (single vs. multiple components)
- Provides freedom of placement on the garment (no longer forced to use a seam)
- The simple and easy closing mechanism prevents damage to the needle ensuring long fault-free operation.
- Unlocks with corresponding S3 HandKey, Multi-Detacher or Super S3 Key

### SUGGESTED APPLICATIONS:

Fine apparel

ORDER CODE	SAP CODE	DESCRIPTION	EXTERNAL DIM. (W x H x L)	CARTON QTY.
HT1550-BLK-S3-AM	10141560	Mini NeedleLok, Black, S3 - AM	11/16" W x 1"1/4 H x 2"1/16 D	250
HT1550-BLK-S3-RF	10141561	Mini NeedleLok, Black, S3 - RF	(18mmW x 32mmH x 53mmL)	250
HT1550-BLK-STD-AM	10141562	Mini NeedleLok, Black, Standard - AM	11/16" W x 1"1/4 H x 2"1/16 D	250
HT1550-BLK-STD-RF	10141563	Mini NeedleLok, Black, Standard - RF	(18mmW x 32mmH x 53mmL)	250
HT1550-BLK-SPR-AM	10141564	Mini NeedleLok, Black, Super - AM	11/16" W x 1"1/4 H x 2"1/16 D	250
HT1550-BLK-SPR-RF	10141565	Mini NeedleLok, Black, Super - RF	(18mmW x 32mmH x 53mmL)	250